

South Kesteven District Council LGR Interim Proposal Supplementary Information

March 2025

CONTENTS

Page	Data Sets
3-5	Population and Demographics
6	Population Projections
7-8	Councillors and electorate
9	Parliamentary constituency structure
10-11	Deprivation
12	Council Tax Base – chargeable dwellings; bandings profile; Band D equivalents
13	Economy GVA (Gross Value Add)
13	Economy GDHI (Gross Domestic Household Income)
14	ONS Health Index
15	Data Sources

Population & Demographics

This page sets out the overall population totals based on the most recent data (July 2024) published by the ONS (July 2024).

For simplicity the seven Lincolnshire districts are listed first in alphabetical order; followed by Rutland, and then the two current northern unitaries again in alphabetical order. This ordering is used, with the exception of the deprivation data sets, throughout this supplementary information pack.

The top table shows the population by under 16, 16-64 (“working age”) , 65 and over, plus the overall total. Plus the percentage of the total population that each of those three groupings represents.

In the bottom table populations are shown for under 18s, 18-29s, and then ten year age bands, with a final column covering all aged 90 years and over.

The overall total for each age group is shown followed by the age group total for each of our proposed unitary authorities.

Unitary 1 – North Kesteven DC, South Holland DC, South Kesteven DC, Rutland CC

Unitary 2 – Boston BC, Lincoln Council, East Lindsey DC, West Lindsey DC

Unitary 3 – North East Lincolnshire Council, North Lincolnshire Council

	Under 16	16-64	65 & over	Total	Under 16	16-64	65 & over
Boston	13,562	42,956	14,849	71,367	19.0%	60.2%	20.8%
East Lindsey	20,900	79,464	45,007	145,371	14.4%	54.7%	31.0%
Lincoln	16,881	70,826	15,607	103,314	16.3%	68.6%	15.1%
North Kesteven	20,200	72,243	28,760	121,203	16.7%	59.6%	23.7%
South Holland	16,850	57,383	23,682	97,915	17.2%	58.6%	24.2%
South Kesteven	25,710	85,686	34,362	145,758	17.6%	58.8%	23.6%
West Lindsey	16,302	56,551	25,027	97,880	16.7%	57.8%	25.6%
Rutland	6,584	23,363	10,696	40,643	16.2%	57.5%	26.3%
North East Lincolnshire	29,521	94,880	33,934	158,335	18.6%	59.9%	21.4%
North Lincolnshire	30,319	101,194	38,574	170,087	17.8%	59.5%	22.7%
TOTAL	196,829	684,546	270,498	1,151,873	17.1%	59.4%	23.5%
U1	69,344	238,675	97,500	405,519	17.1%	58.9%	24.0%
U2	67,645	249,797	100,490	417,932	16.2%	59.8%	24.0%
U3	59,840	196,074	72,508	328,422	18.2%	59.7%	22.1%

As the table above shows the working age percentage in each of the three proposed unitaries has less than a percentage point difference between the lowest, Unitary 1 with 58.9% and highest Unitary 2 with 59.8%.

24% of the population in both Unitary 1 and Unitary 2 are aged 65 and over. Unitary 3 is slightly lower at 22.1%. This is largely due to its slightly higher proportion of under 16 as compared with the other two proposed unitaries.

	Under 18	18-29	30-39	40-49	50-59	60-69	70-79	80-89	90+
Boston	15,234	8,698	9,321	8,781	9,893	8,603	6,826	3,256	755
East Lindsey	23,761	14,745	13,632	13,385	22,070	24,639	21,796	9,555	1,788
Lincoln	18,901	25,384	15,261	11,327	11,429	9,598	7,179	3,427	808
North Kesteven	22,849	14,312	14,761	13,760	18,122	15,757	13,610	6,799	1,233
South Holland	18,930	10,974	11,940	11,302	14,263	12,781	11,042	5,498	1,185
South Kesteven	29,174	15,790	17,084	17,479	21,735	18,844	16,437	7,656	1,559
West Lindsey	18,401	10,437	10,880	10,952	14,643	14,192	11,977	5,492	906
Rutland	7,972	4,427	4,099	4,710	5,922	5,328	5,003	2,613	569
North East Lincolnshire	33,257	19,736	20,420	17,603	22,228	20,366	15,525	7,666	1,534
North Lincolnshire	34,349	19,626	21,157	19,280	24,917	22,549	18,125	8,340	1,744
TOTAL	222,828	144,129	138,555	128,579	165,222	152,657	127,520	60,302	12,081
U1	78,925	45,503	47,884	47,251	60,042	52,710	46,092	22,566	4,546
U2	76,297	59,264	49,094	44,445	58,035	57,032	47,778	21,730	4,257
U3	67,606	39,362	41,577	36,883	47,145	42,915	33,650	16,006	3,278

Population & Demographics

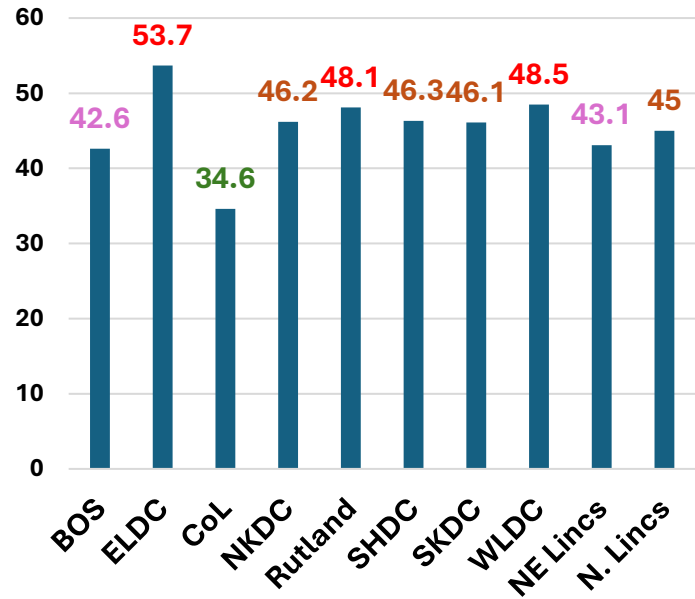
This page expands on the overall population totals captured on the previous page.

The table top right shows the percentage of the population in terms under 18s, 18-29s; then ten year age bands, until all aged 90+. The Lincoln 18-29 spike is due to the city’s two universities.

The chart below shows the median age for each council. The U1 councils are all similar, none having a median age below 46. The U2 group have a much broader range – with the median in ELDC being 53.7 years, as compared with almost 20 years less at 34.6 in Lincoln.

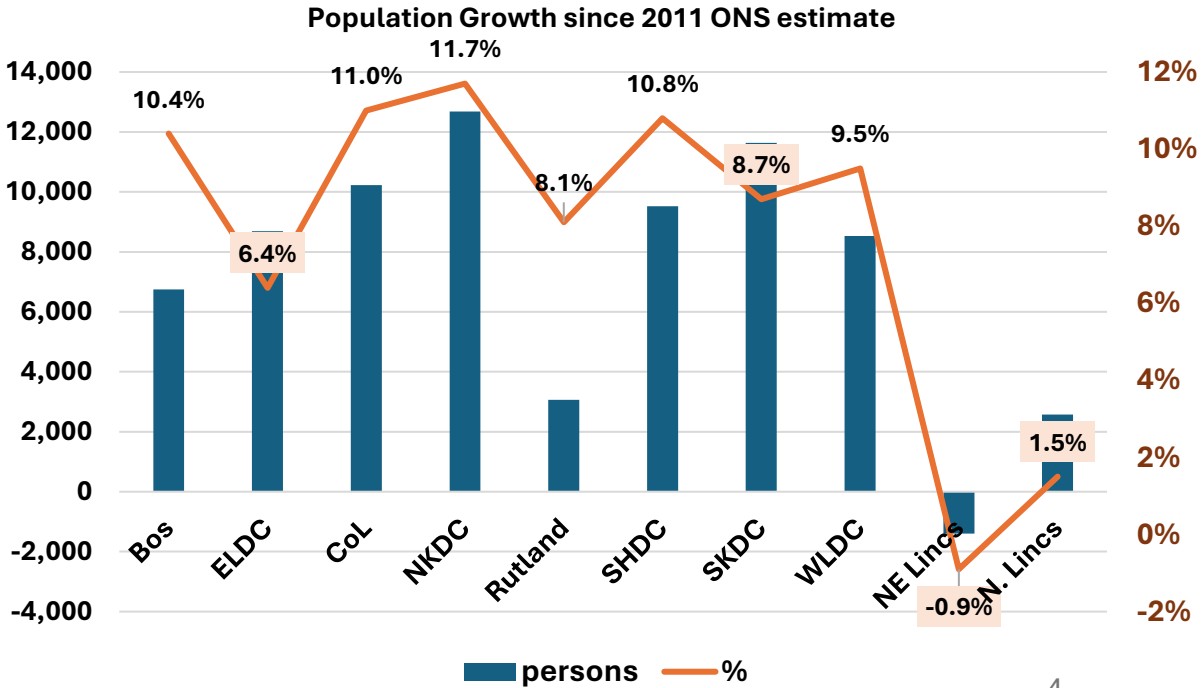
	Under 18	18-29	30-39	40-49	50-59	60-69	70-79	80-89	90+
Boston	21.3%	12.2%	13.1%	12.3%	13.9%	12.1%	9.6%	4.6%	1.1%
ELDC	16.3%	10.1%	9.4%	9.2%	15.2%	16.9%	15.0%	6.6%	1.2%
Lincoln	18.3%	24.6%	14.8%	11.0%	11.1%	9.3%	6.9%	3.3%	0.8%
NKDC	18.9%	11.8%	12.2%	11.4%	15.0%	13.0%	11.2%	5.6%	1.0%
SHDC	19.3%	11.2%	12.2%	11.5%	14.6%	13.1%	11.3%	5.6%	1.2%
SKDC	20.0%	10.8%	11.7%	12.0%	14.9%	12.9%	11.3%	5.3%	1.1%
WLDC	18.8%	10.7%	11.1%	11.2%	15.0%	14.5%	12.2%	5.6%	0.9%
Rutland	19.6%	10.9%	10.1%	11.6%	14.6%	13.1%	12.3%	6.4%	1.4%
NE Lincs	21.0%	12.5%	12.9%	11.1%	14.0%	12.9%	9.8%	4.8%	1.0%
N Lincs	20.2%	11.5%	12.4%	11.3%	14.6%	13.3%	10.7%	4.9%	1.0%
U1	19.5%	11.2%	11.8%	11.7%	14.8%	13.0%	11.4%	5.6%	1.1%
U2	18.3%	14.2%	11.7%	10.6%	13.9%	13.6%	11.4%	5.2%	1.0%
U3	20.6%	12.0%	12.7%	11.2%	14.4%	13.1%	10.2%	4.9%	1.0%

Median Age



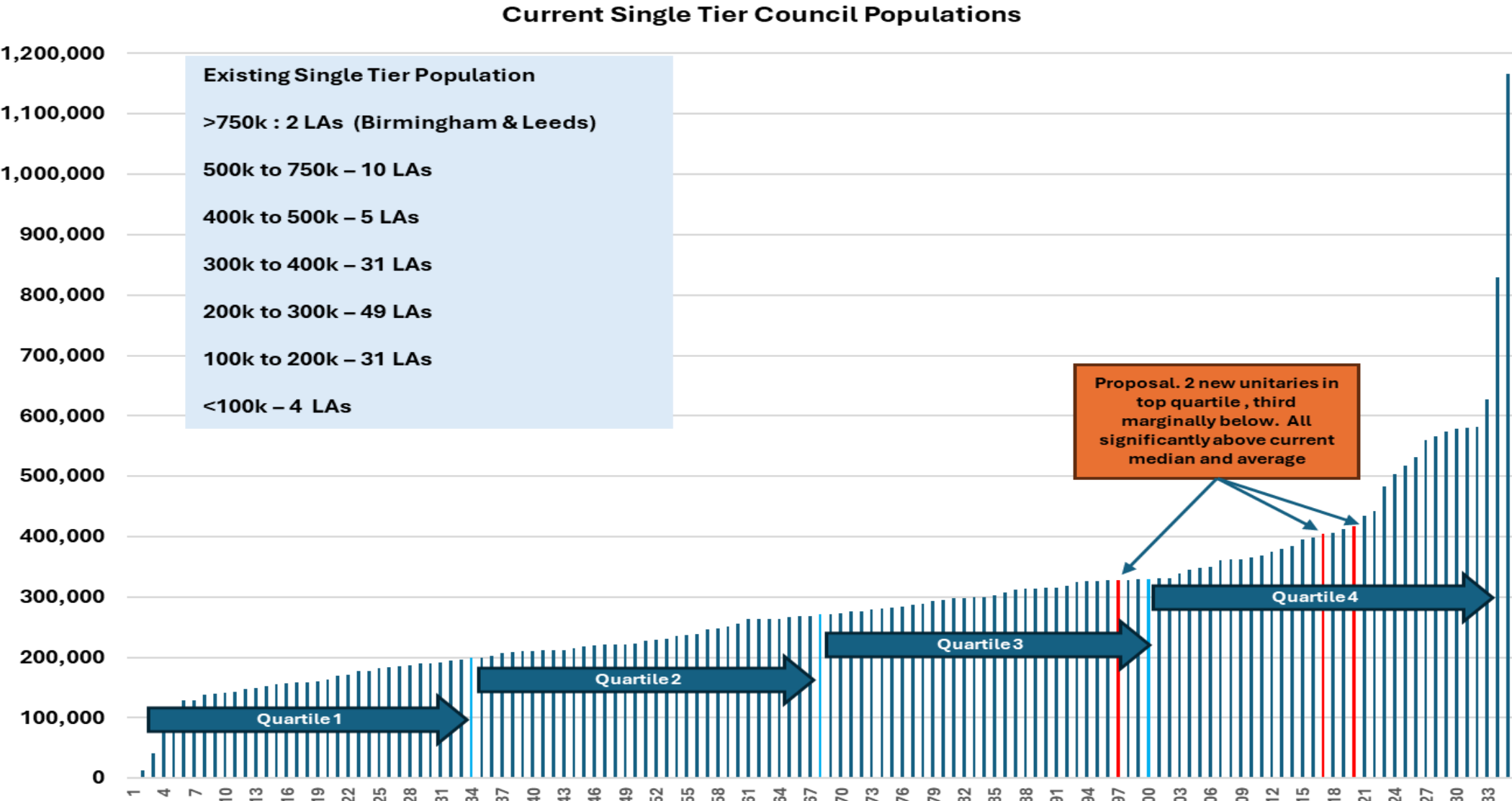
The chart to the left shows the populations growth since the 2011 ONS estimate in terms of both persons and percentage. Growth in 7 of the 10 councils has been between 8% and near 12%.

ELDC has been a little lower at 6.4%. However, the two northern unitaries have seen the population remain near to flat, with NE Lincs showing a 0.9% population decrease over that period.



Population & Demographics

This page provides a full size version of the population graph used on page 7 of the main proposal



Population Projections

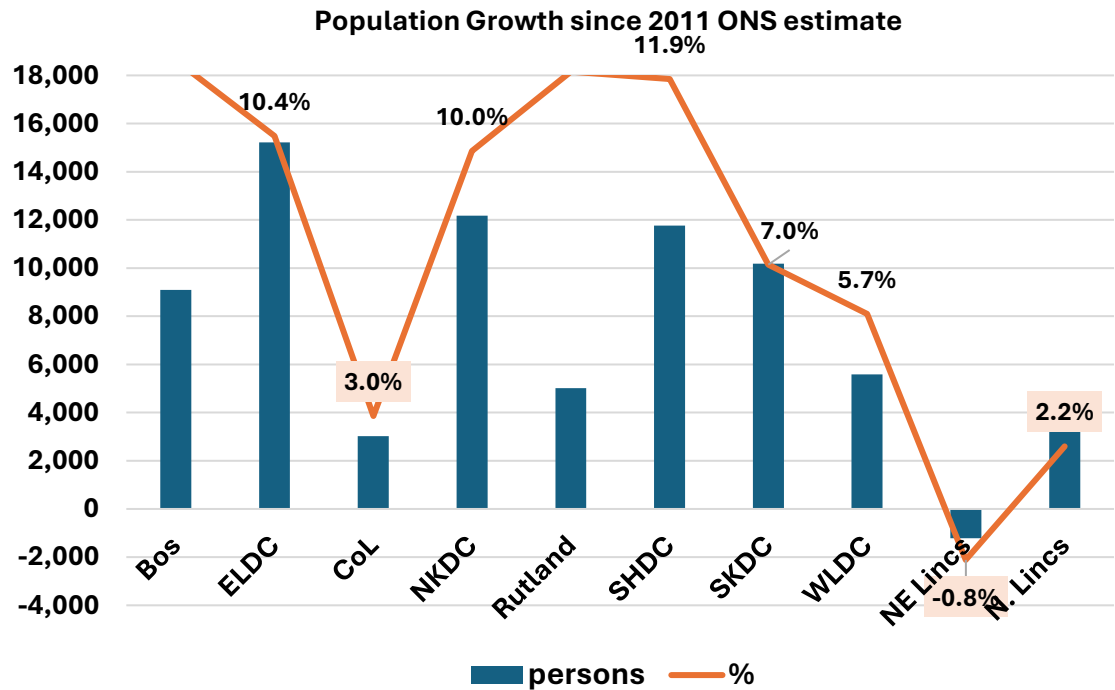
This page looks at population projections. The current ONS population projections date from 2020 and are based on the 2018 mid-year population estimates. The next iteration is expected from the ONS in spring this year, with the national level projections already released. The base figures used here will therefore differ from the mid-year 2023 estimate used on the two previous pages – the difference however is not significant.

The table left shows a projected growth path that would take the U1 and U2 populations near to 450,000 by 2043. With the already very small population differential between the two potential unitaries falling to less than 1%.

The dataset also provides age band projections, and continues to reconfirm an ageing population across most council areas.

The full business case will include an updated and expanded assessment of population and demographic mix projections over the next few decades using the latest ONS projections due out shortly but not released ahead of the interim proposal deadline.

AREA	2023	2028	2033	2038	2043
Boston	73,517	76,378	78,663	80,693	82,615
East Lindsey	146,507	151,397	155,329	158,673	161,718
Lincoln	99,486	101,088	102,322	102,342	102,514
North Kesteven	121,529	125,758	128,663	131,202	133,700
South Holland	98,502	102,127	105,078	107,703	110,272
South Kesteven	145,637	148,764	151,168	153,388	155,821
West Lindsey	97,347	99,247	100,637	101,795	102,940
Rutland	41,511	43,225	44,434	45,462	46,522
North East Lincolnshire	160,028	159,498	158,902	158,703	158,816
North Lincolnshire	174,548	175,743	176,491	177,331	178,336
U1	407,179	419,874	429,342	437,754	446,315
U2	416,857	428,110	436,950	443,502	449,787
U3	334,577	335,241	335,393	336,034	337,152
Total	1,158,613	1,183,224	1,201,685	1,217,291	1,233,255



The chart left shows the percentage population growth at individual council level. Again these will be updated once the latest ONS projections are released. The current projections for example see a 10% increase in North Kesteven, and a small decline in North East Lincolnshire. Neither unexpected given the data shown on the previous page. However, 10% growth is also projected for East Lindsey, 12% in Rutland but only 3% in Lincoln, all of which could be seen as higher for the former two and lower for the latter than expected..

Democracy - Councillors

The table right shows the current position across the ten councils expanding on the table in the main interim proposal document. This totals 472 seats.

In the two-tier areas 37 LCC councillors (53% of total LCC seats) are also district councillors.

For the overall councillor total these dual members are counted only once. There are therefore 435 current sitting councillors (noting that one LCC seat is currently vacant) giving an overall electorate ratio of just under 2,000.

As the table shows this ratio is much lower in Rutland (1099) and higher in the two northern unitaries (2782 and 3029 respectively).

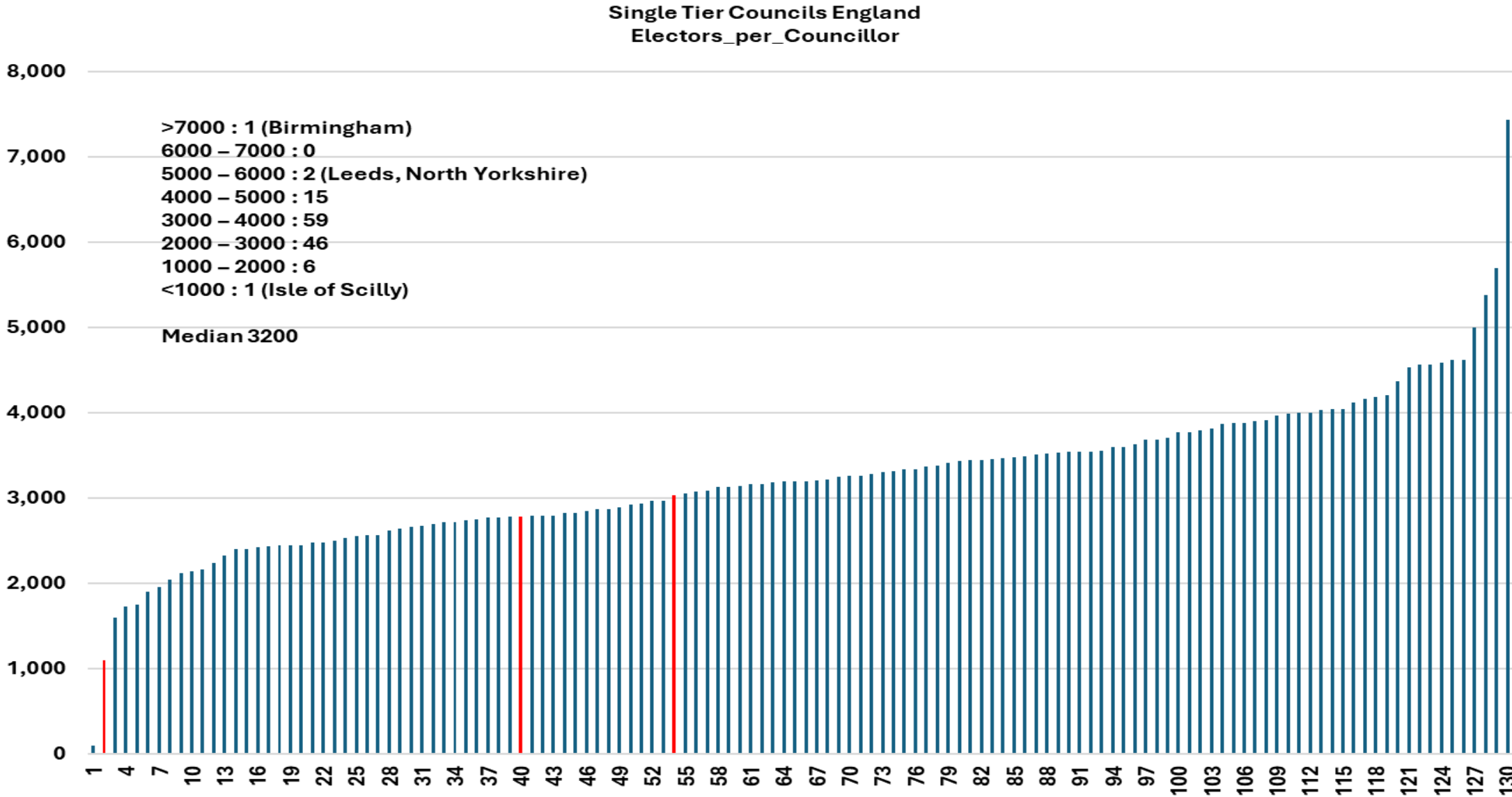
This second table below shows details for unitaries with +/- 10% of the indicative U1 and U2 populations; along with the newly formed Cumbria unitaries. Overall these LAs have a ratio of 3665 electors per councillors, with the median slightly higher at 3667.

	Unitaries	District	County	Total	Two Tier areas	Total	LBBCE	
LA	Cllrs	Cllrs	Cllrs	Seats	Dual Cllrs	Councillors	Electorate	Electorate per Cllr
Boston		30	6	36	2	34	49,034	1,442
East Lindsey		55	13	68	7	61	110,981	1,819
Lincoln		33	8	41	3	38	62,003	1,632
North Kesteven		43	11	54	6	48	93,256	1,943
South Holland		37	9	46	7	39	72,537	1,860
South Kesteven		56	14	70	6	64	108,868	1,701
West Lindsey		36	9	45	6	39	74,419	1,908
Rutland	27			27		27	29,678	1,099
North East Lincolnshire	42			42		42	116,840	2,782
North Lincolnshire	43			43		43	130,239	3,029
U1	27	136	34	197	19	178	304,339	1,710
U2	0	154	36	190	18	172	296,437	1,723
U3	85	0	0	85	0	85	247,079	2,907
TOTAL	112	290	70	472	37	435	847,855	1,949

	Mid year 2023 Pop	LGBCE Electorate	Wards	Cllrs	Electorate per Cllr
West Northants	434,000	298,875	31	93	3214
Cheshire East	412,458	312,766	52	82	3814
BCP	404,050	297,296	33	76	3912
Dorset	384,809	295,144	52	82	3599
Leicester City	379,780	244,504	21	54	4528
North Northants	367,991	268,606	26	78	3444
Cheshire West	365,061	263,663	45	70	3767
Cumberland	278,876	210,172	46	46	4569
Westmoreland	228,187	176,452	33	65	2715
		2,367,478	339	646	3,665

Democracy - Councillors

This page provides a full-page version of the graph used on page 17 of the main proposal



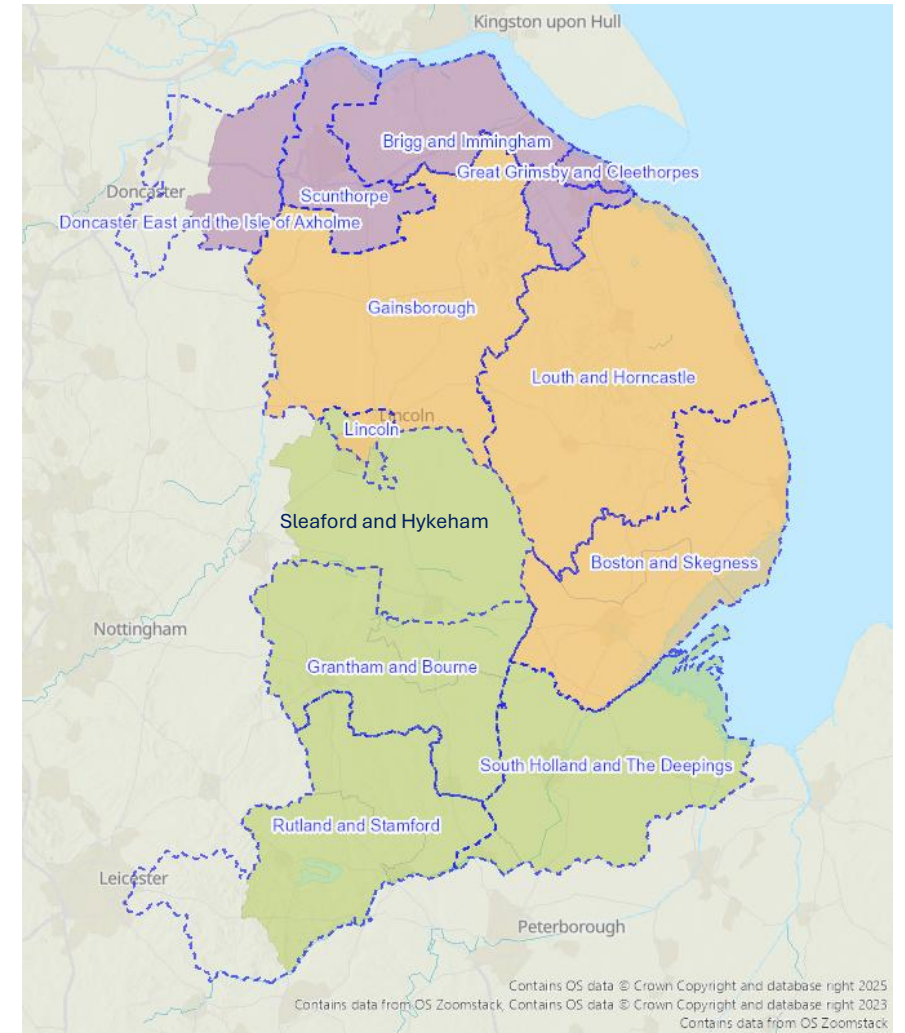
Overlay of Parliamentary Constituencies

Current LA Structure

The maps on this page provide an overlay of parliamentary constituencies on both the current local authority structure in Greater Lincolnshire and Rutland, and our proposal for a future three unitary structure.



Three Unitary Proposal



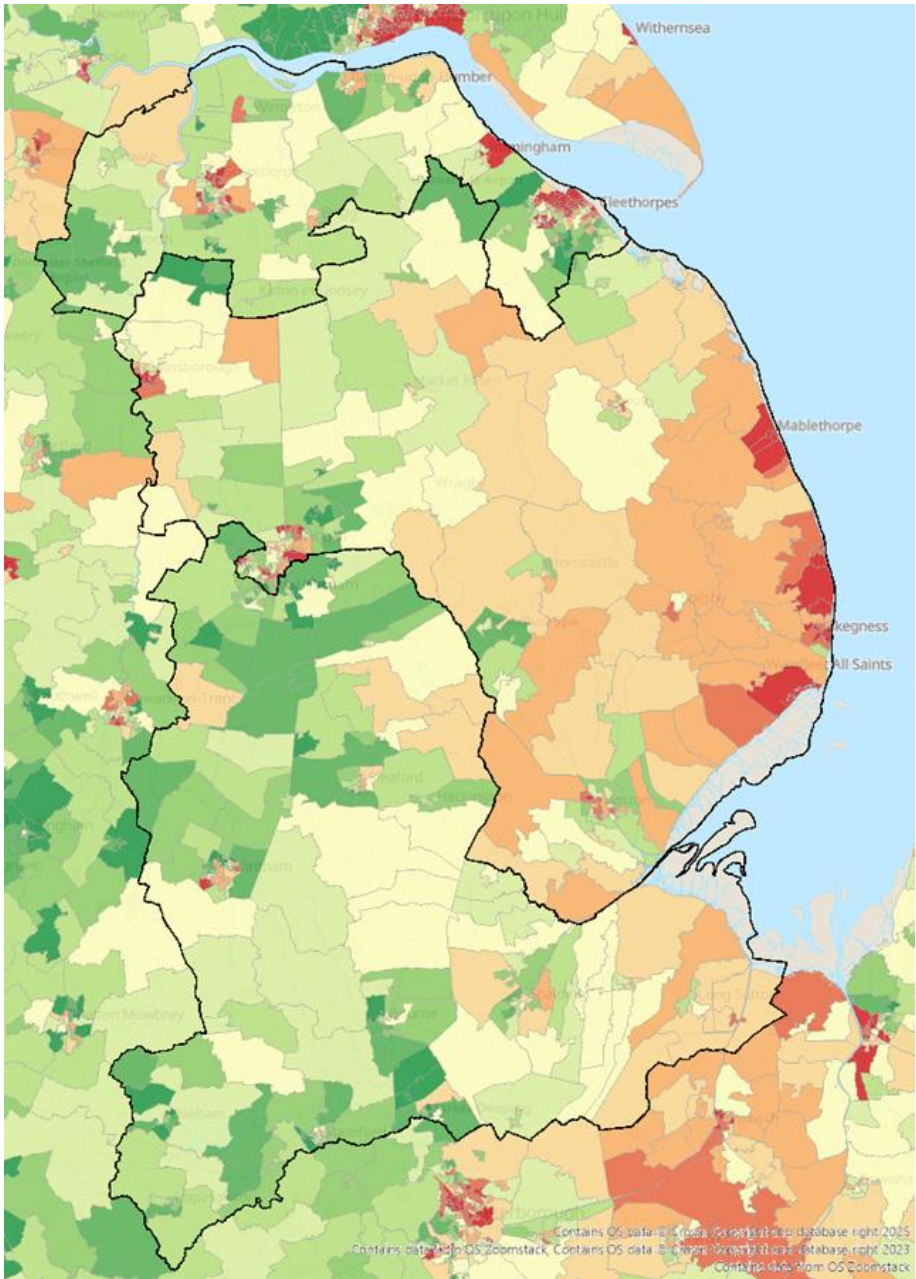
Deprivation

The table immediately below shows the overall deprivation ranking (out of the as then 314 LAs) for each of the councils considered within this three unitary proposal.

Whilst the map, right, shows the deprivation heat map at Lower Super Output Area (LSOA) level. With those in darker shades through to red in the more and most deprived deciles.

The map demonstrates specific pockets of deprivation in Grantham and Gainsborough, plus areas of Lincoln. However it highlights the greater prevalence of coastal deprivation in East Lindsey and in Grimsby and Immingham.

LA	Deprivation Rank
North East Lincolnshire	29
East Lindsey	39
Lincoln	60
Boston	102
North Lincolnshire	115
West Lindsey	136
South Holland	168
South Kesteven	231
North Kesteven	271
Rutland	303



Deprivation

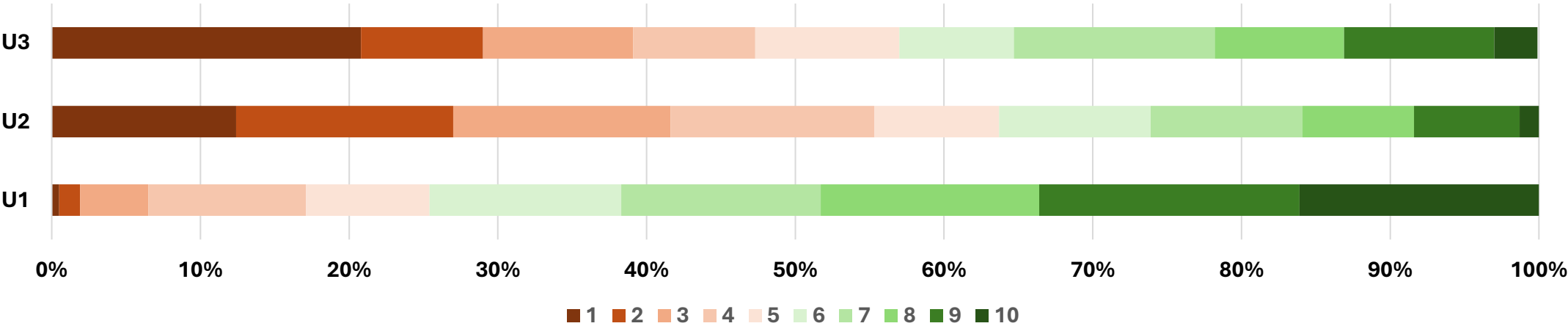
The table, right, shows for each local authority the number of LSOAs in each deprivation decile, where decile 1 is the most deprived and decile 10 the least deprived. A blank cell indicates no LSOAs in that decile. Thus North Kesteven has no LSOA is the most 20% deprived LSOAs and Rutland none in the most 40%.

Both South Holland and Boston have few LSOAs (4 and 1, and 1 and 4 respectively) in either the most deprived or least deprived quintiles

Totals in both numeric and percentage terms are then shown for each of the three unitary groupings considered within this analysis.

The bar chart below provides a visual representation of the percentage totals in each decile.

	Most Deprived									Least	
Deprivation Decile	1	2	3	4	5	6	7	8	9	10	TOTAL
Boston	1	3	10	7	2	5	3	4	1		36
East Lindsey	13	16	13	14	5	5	8	3	4		81
Lincoln	10	9	7	5	5	6	6	6	3		57
North East Lincolnshire	32	8	13	8	6	5	13	7	11	3	106
North Kesteven			3	5	5	5	7	13	16	10	64
North Lincolnshire	11	9	8	9	14	11	15	11	10	3	101
Rutland					1	2	3	5	3	9	23
South Holland		1	3	11	8	11	7	4	4		49
South Kesteven	1	2	4	7	4	10	12	10	15	16	81
West Lindsey	4	5	3	5	7	7	6	4	8	3	52
U1	1	3	10	23	18	28	29	32	38	35	217
U2	28	33	33	31	19	23	23	17	16	3	226
U3	43	17	21	17	20	16	28	18	21	6	207
Total	72	53	64	71	57	67	80	67	75	44	650
U1	0.5%	1.4%	4.6%	10.6%	8.3%	12.9%	13.4%	14.7%	17.5%	16.1%	
U2	12.4%	14.6%	14.6%	13.7%	8.4%	10.2%	10.2%	7.5%	7.1%	1.3%	
U3	20.8%	8.2%	10.1%	8.2%	9.7%	7.7%	13.5%	8.7%	10.1%	2.9%	
Total	11.1%	8.2%	9.8%	10.9%	8.8%	10.3%	12.3%	10.3%	11.5%	6.8%	



Council Tax Base

The upper right table shows the 2024 figures for the number of chargeable dwellings in each council area, with totals for the three unitary option covered in this paper.

To provide a sense of band mix the percentage of properties in each band by council is shown.

The final column of this table shows the combined Bands A-C percentage.

Local Authority	Band A	Band B	Band C	Band D	Band E	Band F	Band G	Band H	Band A-C
Boston	48.5%	20.7%	19.5%	7.5%	2.8%	0.7%	0.3%	0.1%	88.7%
East Lindsey	38.2%	21.3%	22.5%	9.7%	5.3%	2.1%	0.8%	0.1%	82.0%
Lincoln	60.0%	19.7%	10.8%	5.6%	2.7%	0.9%	0.3%	0.1%	90.4%
North Kesteven	25.4%	25.2%	24.5%	13.7%	7.1%	3.1%	0.8%	0.1%	75.2%
South Holland	37.3%	21.8%	24.0%	10.7%	4.8%	1.0%	0.3%	0.0%	83.2%
South Kesteven	29.6%	23.0%	17.5%	14.4%	9.1%	4.6%	1.7%	0.1%	70.1%
West Lindsey	36.9%	18.5%	17.5%	13.5%	8.5%	3.6%	1.2%	0.1%	73.0%
Rutland	9.6%	25.3%	18.6%	14.6%	13.7%	9.7%	7.8%	0.9%	53.4%
North East Lincolnshire	50.9%	24.3%	12.4%	7.1%	3.3%	1.3%	0.7%	0.1%	87.6%
North Lincolnshire	45.7%	21.1%	14.9%	10.1%	5.2%	2.2%	0.7%	0.0%	81.7%
U1	28.3%	23.6%	21.2%	13.3%	7.9%	3.8%	1.7%	0.2%	73.2%
U2	44.6%	20.2%	18.1%	9.3%	5.1%	2.0%	0.7%	0.1%	82.9%
U3	48.3%	22.7%	13.7%	8.6%	4.3%	1.8%	0.7%	0.1%	84.6%
TOTAL	40.1%	22.1%	17.9%	10.5%	5.8%	2.5%	1.0%	0.1%	80.0%

The lower right table shows the absolute number of chargeable dwellings and in the final column the **Band D equivalents** after applications of discounts and premiums to calculate the taxbase.

Local Authority	Band A	Band B	Band C	Band D	Band E	Band F	Band G	Band H	Total	Band D equiv ratio	Band D equivalents
Boston	15,226	6,484	6,125	2,351	863	231	82	16	31,378	0.66	20,704
East Lindsey	26,962	15,049	15,907	6,830	3,745	1,463	590	57	70,603	0.69	48,602
Lincoln	26,438	8,680	4,750	2,484	1,180	394	134	23	44,083	0.59	26,141
North Kesteven	13,451	13,364	12,978	7,275	3,752	1,659	421	47	52,947	0.76	40,293
South Holland	16,389	9,577	10,526	4,695	2,115	441	121	16	43,880	0.70	30,912
South Kesteven	19,583	15,248	11,552	9,496	5,992	3,072	1,115	98	66,156	0.76	50,141
West Lindsey	16,872	8,469	8,001	6,189	3,904	1,663	537	64	45,699	0.73	33,222
Rutland	1,641	4,342	3,189	2,503	2,346	1,659	1,333	151	17,164	0.94	16,130
North East Lincolnshire	37,778	17,995	9,202	5,229	2,448	952	508	54	74,166	0.64	47,584
North Lincolnshire	34,936	16,146	11,378	7,722	3,985	1,701	540	30	76,438	0.69	52,687
U1	51,064	42,531	38,245	23,969	14,205	6,831	2,990	312	180,147	0.76	137,476
U2	85,498	38,682	34,783	17,854	9,692	3,751	1,343	160	191,763	0.67	128,669
U3	72,714	34,141	20,580	12,951	6,433	2,653	1,048	84	150,604	0.67	100,271
TOTAL	209,276	115,354	93,608	54,774	30,330	13,235	5,381	556	522,514	0.70	366,416

Economy GVA – Gross Value Add

GVA (£ million 2022 current prices)															
Authority	2008	2009	2010	2011	2012	2013	2014	2015	2016	2017	2018	2019	2020	2021	2022
Boston	1,029	999	1,005	1,051	1,107	1,162	1,244	1,257	1,297	1,373	1,416	1,450	1,374	1,473	1,591
East Lindsey	1,848	1,778	1,801	1,882	1,927	2,034	2,067	2,104	2,146	2,265	2,272	2,436	2,342	2,558	2,695
Lincoln	2,159	2,134	2,146	2,166	2,196	2,304	2,356	2,510	2,533	2,620	2,734	2,843	2,689	2,862	3,026
North Kesteven	1,917	1,847	1,857	1,878	1,987	2,084	2,159	2,175	2,165	2,372	2,508	2,664	2,632	2,895	3,188
South Holland	1,472	1,446	1,450	1,481	1,574	1,687	1,716	1,733	1,830	2,001	2,079	2,116	2,155	2,421	2,468
South Kesteven	2,306	2,214	2,271	2,269	2,427	2,503	2,553	2,534	2,528	2,733	2,771	2,864	2,751	2,934	3,202
West Lindsey	1,138	1,075	1,083	1,102	1,150	1,251	1,303	1,324	1,313	1,371	1,458	1,603	1,597	1,805	1,960
Rutland	702	669	702	687	707	707	734	778	815	796	818	801	809	915	1,024
North East Lincolnshire	2,630	2,613	2,549	2,645	2,668	2,754	2,940	3,065	3,041	3,124	3,097	3,246	3,305	3,761	4,059
North Lincolnshire	3,804	3,442	3,672	3,372	3,383	3,471	3,523	3,913	4,016	4,353	4,254	5,037	4,409	5,785	6,794
U1	6,397	6,176	6,280	6,315	6,695	6,981	7,162	7,220	7,338	7,902	8,176	8,445	8,347	9,165	9,882
U2	6,174	5,986	6,035	6,201	6,380	6,751	6,970	7,195	7,289	7,629	7,880	8,332	8,002	8,698	9,272
U3	6,434	6,055	6,221	6,017	6,051	6,225	6,463	6,978	7,057	7,477	7,351	8,283	7,714	9,546	10,853

Economy GDHI – Gross Domestic Household Income

GDHI per head (£ 2022 current prices)															
Authority	2008	2009	2010	2011	2012	2013	2014	2015	2016	2017	2018	2019	2020	2021	2022
Boston	13,883	14,024	14,016	14,472	14,884	14,930	15,392	15,828	15,758	16,012	16,111	17,194	16,867	17,417	18,332
East Lindsey	13,172	13,567	13,998	14,389	14,858	15,339	15,872	16,560	16,607	17,045	17,731	18,430	18,536	18,845	19,807
Lincoln	11,829	12,440	12,398	12,748	13,033	13,030	13,352	13,643	13,762	14,005	14,425	14,961	15,224	15,599	16,215
North Kesteven	14,679	15,011	15,186	15,505	16,004	16,380	16,901	17,491	17,542	18,016	18,493	18,945	19,178	19,442	20,318
South Holland	14,067	14,296	14,470	14,740	15,263	15,576	16,094	16,552	16,574	17,027	17,231	17,415	17,754	18,582	19,391
South Kesteven	15,881	16,011	16,350	16,625	17,056	17,414	17,932	18,630	18,615	19,185	20,638	21,297	21,318	21,553	22,864
West Lindsey	14,728	14,997	15,319	15,700	16,021	16,538	17,058	17,614	17,649	18,370	18,456	19,178	19,714	20,483	21,580
Rutland	17,888	18,183	18,445	18,885	19,801	20,115	20,595	21,931	21,506	22,066	23,527	24,893	24,105	25,487	28,090
North East Lincolnshire	12,696	12,889	13,024	13,495	13,894	14,066	14,404	14,942	15,205	15,815	16,137	16,785	17,231	17,299	18,139
North Lincolnshire	12,764	12,848	12,837	13,316	13,749	13,936	14,227	14,770	14,975	15,551	16,285	16,784	16,979	17,355	18,195

As per capita no overall proposed unitary totals calculated at the interim proposal stage

Health

The ONS Health Index has been used to provide a top level indicator. The metrics used within each domain (below left and centre) are used to give the aggregated domain scores; and the overall score (below right). Healthy People comprises 26 metrics; whilst Lives and Places both have 22 metrics. The most recent ONS index as used in this paper was published in June 2023, with no date announced as yet for the next publication. The ONS data provides scores for every metric plus a time-series view allowing scope for a deeper dive analysis as part of the business case development.

Healthy People Domain	Healthy Lives Domain	Healthy Places Domain
Difficulties in daily life [Pe]	Behavioural risk factors [L]	Access to green space [Pl]
Disability [Pe1]	Alcohol misuse [L1]	Private outdoor space [Pl1]
Fraility [Pe1]	Drug misuse [L1]	Access to services [Pl]
Mental health [Pe]	Healthy eating [L1]	Distance to GP services [Pl2]
Children's social, emotional and mental health [Pe2]	Physical activity [L1]	Distance to pharmacies [Pl2]
Mental health conditions [Pe2]	Sedentary behaviour [L1]	Distance to sports or leisure facilities [Pl2]
Self-harm [Pe2]	Sexually transmitted infections [L1]	Internet access [Pl2]
Suicides [Pe2]	Smoking [L1]	Patients offered acceptable GP practice appointments [Pl2]
Mortality [Pe]	Children and young people [L]	Crime [Pl]
Avoidable mortality [Pe3]	Early years development [L2]	Low-level crime [Pl3]
Infant mortality [Pe3]	Pupil absences [L2]	Personal crime [Pl3]
Life expectancy [Pe3]	Pupil attainment [L2]	Economic and working conditions [Pl]
Mortality from all causes [Pe3]	Teenage pregnancy [L2]	Child poverty [Pl4]
Personal well-being [Pe]	Young people in education, employment and apprenticeships [L2]	Job-related training [Pl4]
Activities in life are worthwhile [Pe4]	Physiological risk factors [L]	Unemployment [Pl4]
Feelings of anxiety [Pe4]	High blood pressure [L3]	Workplace safety [Pl4]
Happiness [Pe4]	Low birth weight [L3]	Living conditions [Pl]
Life satisfaction [Pe4]	Overweight and obesity in adults [L3]	Air pollution [Pl5]
Physical health conditions [Pe]	Overweight and obesity in children [L3]	Household overcrowding [Pl5]
Cancer [Pe5]	Protective measures [L]	Noise complaints [Pl5]
Cardiovascular conditions [Pe5]	Cancer screening attendance [L4]	Road safety [Pl5]
Dementia [Pe5]	Child vaccination coverage [L4]	Rough sleeping [Pl5]
Diabetes [Pe5]		
Kidney and liver disease [Pe5]		
Musculoskeletal conditions [Pe5]		
Respiratory conditions [Pe5]		

Area Name	Health Index Overall	Healthy People Domain	Healthy Lives Domain	Healthy Places Domain
Boston	88.0	88.9	85.3	95.5
East Lindsey	92.2	87.1	94.5	98.7
Lincoln	85.3	79.9	92.6	90.6
North Kesteven	114.8	98.5	110.1	128.6
South Holland	94.4	88.7	90.8	106.5
South Kesteven	107.7	98.8	103.9	116.7
West Lindsey	106.7	98.3	106.3	112.2
Rutland	124.6	113.7	121.3	126.8
North East Lincolnshire	93.6	87.3	91.2	105.3
North Lincolnshire	98.3	96.8	92.9	106.0
U1	110.4	99.9	106.5	119.7
U2	93.1	88.6	94.7	99.3
U3	96.0	92.1	92.1	105.7

Data Sources

Population

<https://www.ons.gov.uk/peoplepopulationandcommunity/populationandmigration/populationestimates/bulletins/populationestimatesforenglandandwales/mid2023> released June 2024

Population Projections

<https://www.ons.gov.uk/peoplepopulationandcommunity/populationandmigration/populationprojections/datasets/localauthoritiesinenglandtable2> released March 2020. This is the latest version; the 2022 based update is expected for release February/March. The national level 2022 based projections were released end January 2025

Electorate

<https://www.lgbce.org.uk/electoral-data>

Councillors

Overall councillor and ward numbers from the lgbce link above; councillor information from Districts' and LCC's websites.

Deprivation

<https://www.gov.uk/government/statistics/english-indices-of-deprivation-2019>

Council Tax

[Council Taxbase 2024 in England - GOV.UK](#)

Gross Value Added (GVA)

[Regional gross value added \(balanced\) by industry: local authorities by ITL1 region - Office for National Statistics](#)

Gross Domestic Household Income (GDHI)

[Regional gross disposable household income: local authorities by ITL1 region - Office for National Statistics](#)

Health

<https://www.ons.gov.uk/peoplepopulationandcommunity/healthandsocialcare/healthandwellbeing/datasets/healthindexscoresengland>